

Smart Logistics

32nd Marine Forum 2017

Kievits Kroon Country Estate

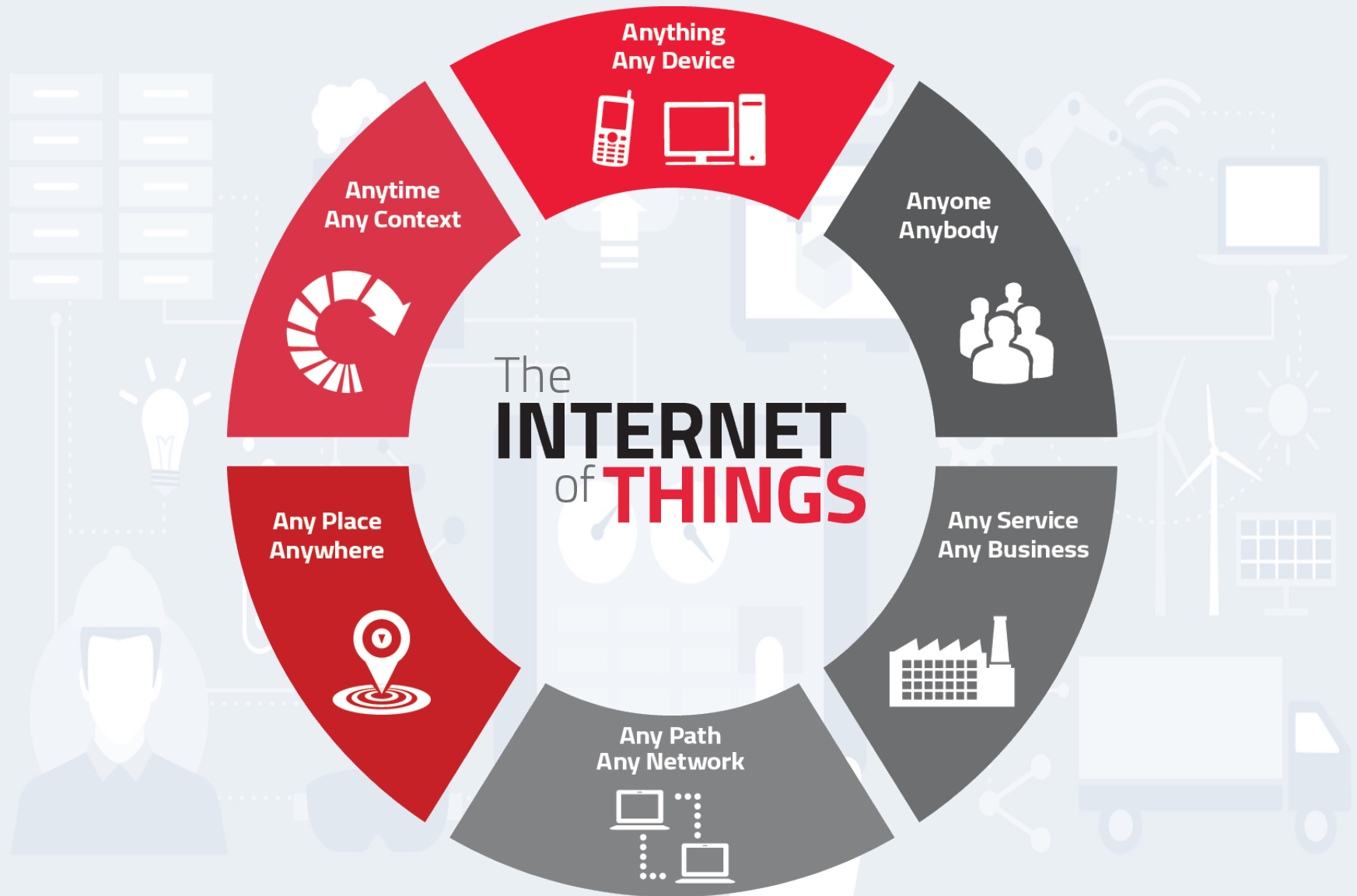
12th/13th of May 2017

WKW
WK Webster

Outline

- **Definitions**
 - IoT
 - Smart Logistics
 - **Cargo tracking**
 - **Underwriters perspective**
 - **Security and new risks**
 - **Summary**
- 
- The background features a light blue gradient with various white and light blue icons. These include a server rack, a factory with smoke, a cloud with an upward arrow, a 3D printer, a robotic arm, a laptop, a hand pointing at a tablet, a person's head and shoulders, a pair of goggles, gears, wind turbines, solar panels, and a delivery truck. Dotted lines connect many of these icons, suggesting a networked or interconnected system.

Definitions



Cargo Tracking



Dimensions: 5.2 x 3.2 x 1 in.

130 x 80 x 25mm

Weight: 6oz / 170g



Current Location



Temperature



Tamper



Humidity



Light



Air Pressure
(Altitude)



Shock



Delays



Non-Permitted
Movement



Deviation from
Assigned Route

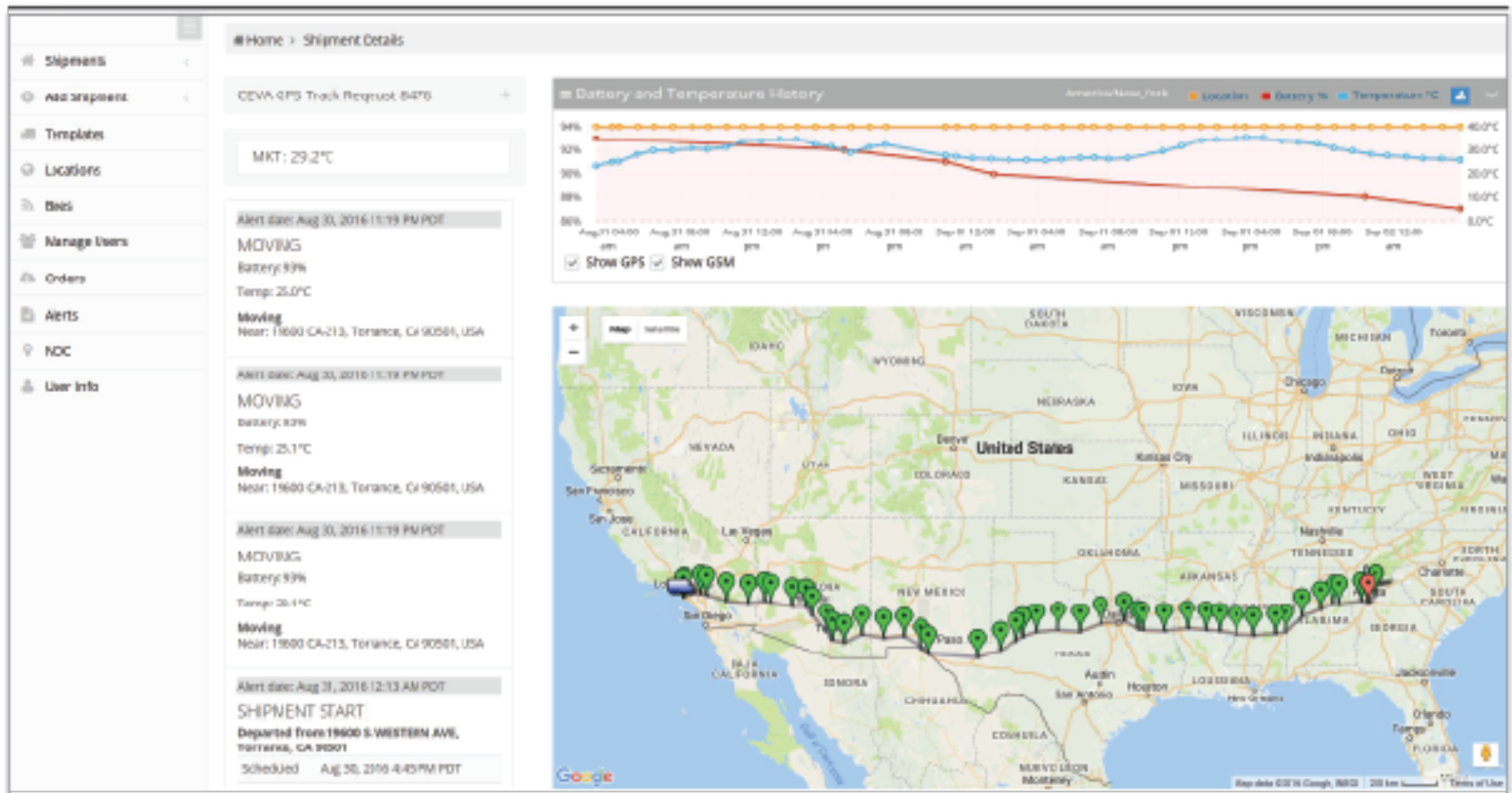


Change in ETA

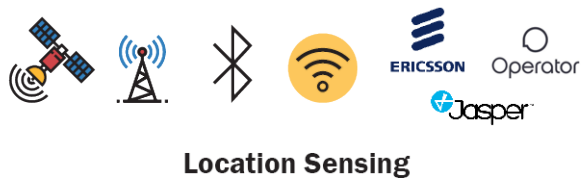
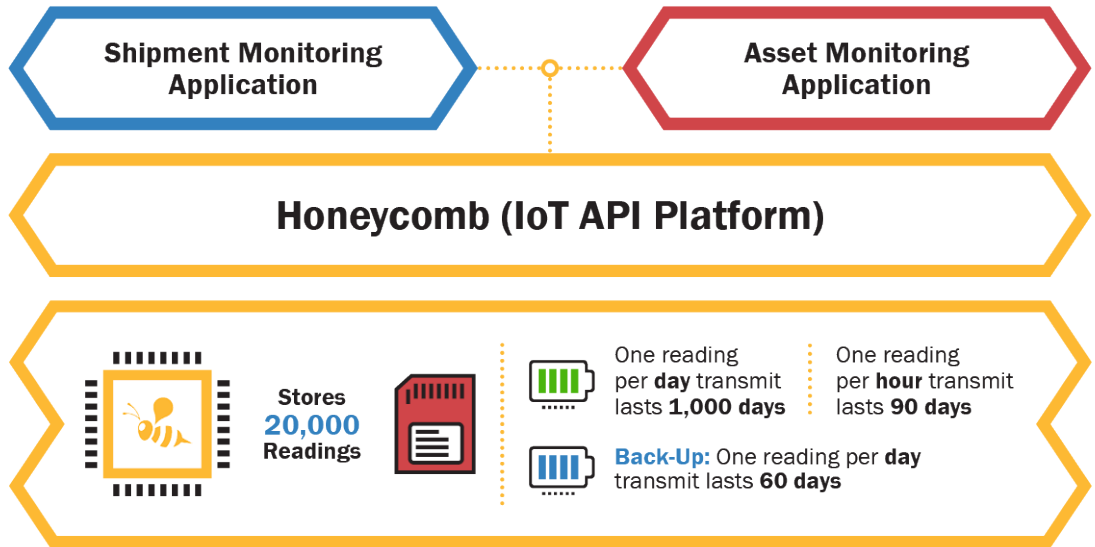
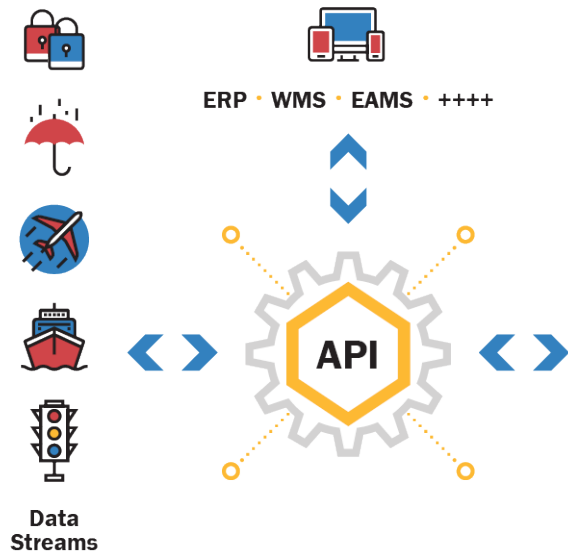


Crossing Waypoints

Cargo Tracking



Cargo Tracking



Cargo Tracking

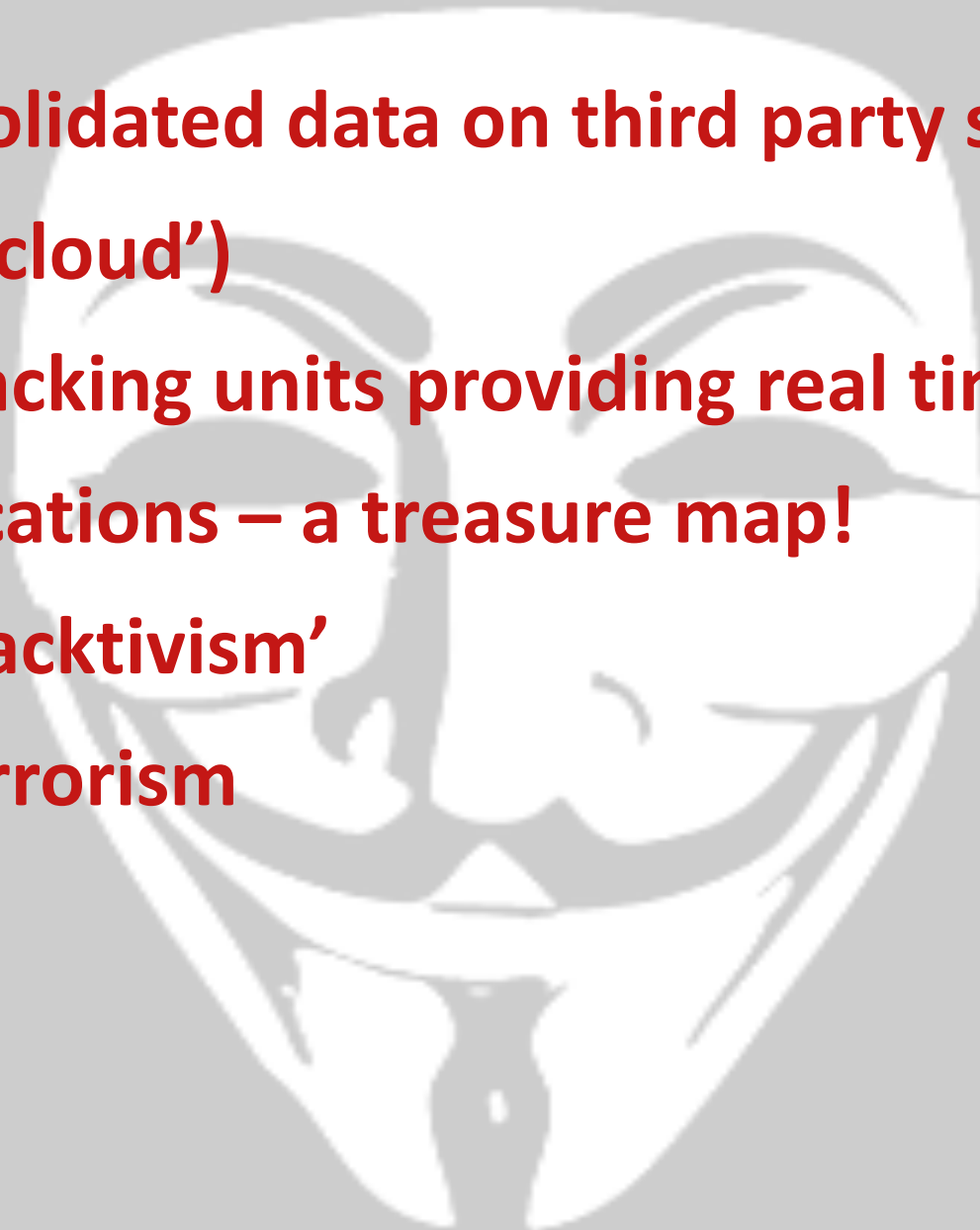
- **Possibility to rectify problems before loss is incurred**
- **Earlier notification/warning allowing survey, loss mitigation or recovery of a stolen cargo**
- **Full control over information – better subrogated recoveries for cargo interest**

Underwriters perspective

- **New opportunities – now and in the future**
 - **Better analytics and risk modelling**
 - **Premium incentive for cargo owners**
 - **STP/Warehouse product/premium opportunities based on real-time data**
 - **The possibility of an alert system**

Security and new risks

- Consolidated data on third party servers ('the cloud')
 - Tracking units providing real time exact locations – a treasure map!
 - 'Hacktivism'
 - Terrorism



Security and new risks

- **Tracking device = foreign object**
 - **Lithium-ion batteries**
 - **Contamination risk**
- **False sense of security?**

